



Fire alarm central **Salwico Cargo (AI)**

Part no. F400-101-X010YA,
F800-101-X010YA

G023068

System: Salwico cargo

About the datasheet

This datasheet contains information for the following fire alarm central Salwico Cargo (AI):

| Part no. | Description |
|-----------------|---|
| F400-101-X010YA | 400 - Wall mounted X - No of relay modules 1 or 2 Y - No of loop modules 2 to 6 |
| F800-101-X010YA | 800 - Recess mounted X - No of relay modules 1 or 2 Y - No of loop modules 2 to 6 |

The central will have a setup with some of the modules X and Y according to above specification.

General Description

Salwico Cargo (AI) is an addressable analogue fire alarm system and general alarm system. The control panel is built-in in the main cabinet. It is also possible to attach remote control and repeater panels to the system. For more information about the Control/Repeater Panel M 4.3 (5100195-20A) and Repeater M 4.3 (5100096-20A) , see separate datasheets.

Parts included in the delivery:

| Name | Quantity |
|---|----------|
| Control panel, internal | 1 |
| I/O 700, 8pcs of powered output (24VDC/700mA) programmable (function unspecified) | 1 |
| Batteries 24V, 2.3Ah | 1 |
| Relay M 8 module, 8 programmable potential free outputs for each Relay M 8 | 1 to 2 |

Features:

- 1 × General alarm (GA) input
- 1 × Isolated serial interface RS485/422
- 1 × Isolated serial interface RS232/485
- 2 to 6 × Addressable loops accommodating up to 254 loop units per loop

The cabinet is for wall or console mounting. Mounting brackets for wall mounting and one multi flange is included in the delivery. Salwico Cargo (AI) is SOLAS compliant and certified by all major classification societies for marine applications. For more information, please refer to the datasheets of the system modules and the Salwico Cargo manuals.

Data

| | |
|--------------------|---------------------------------|
| Power consumption | Appr. 100 W in normal condition |
| Heat emission | Appr. 25 Kcal/h |
| Ingress Protection | IP 32 |
| Cable terminals | 2.5 mm ² |
| Temperature range | -5 °C to +55 °C |
| Material, cabinet | Steel |
| Colour, cabinet | RAL7035 |
| Weight | 22 kg ± 5% |

Connections

| Description | Part no. | Quantity | Address |
|-------------|-------------|------------|------------------------|
| Relay M8 | 5100080-01A | 1 to 2 pcs | 72, 73 |
| I/O 700 | 5100076-01A | 1 pcs | 64 |
| Loop MX | 5100025-01A | 2 to 6 pcs | 11, 12, 13, 14, 15, 16 |
| BusCon M 10 | 5100055-01A | 1 pcs | N/A |
| BusCon M 20 | 5100053-01A | 1 pcs | N/A |

| I/O M 700 ADDRESS: 64 | | | | | | | |
|--------------------------|---------------------|---------------------|---------------------|----------|----------|---------------------------------|---------------------------------|
| 1 | 2 | 3 | 4 | 5 | 6 | 7 | 8 |
| PROGRAMMABLE OUTPUT | PROGRAMMABLE OUTPUT | PROGRAMMABLE OUTPUT | PROGRAMMABLE OUTPUT | NOT USED | NOT USED | 24VDC TO EXTERNAL CONTROL PANEL | 24VDC TO EXTERNAL CONTROL PANEL |
| 24V 0.7A | 24V 0.7A | 24V 0.7A | 24V 0.7A | 24V 0.7A | 24V 0.7A | 24V 0.7A | 24V 0.7A |
| 1+ | 2+ | 3+ | 4+ | 5- | 6- | 7+ | 8- |

| BUS CON M 20 | | | | | | | |
|---|---|-----------------------------------|-----------------------------------|-----------------------------------|-----------------------------------|-----------------------------------|-----------------------------------|
| 3 | 4 | 4 | 4 | 4 | 4 | 4 | 4 |
| RELAY 30VDC/Max. 1A PROGRAMMABLE OUTPUT | RELAY 30VDC/Max. 1A PROGRAMMABLE OUTPUT | ISOLATED SERIAL INTERFACE CHANNEL | ISOLATED SERIAL INTERFACE CHANNEL | ISOLATED SERIAL INTERFACE CHANNEL | ISOLATED SERIAL INTERFACE CHANNEL | ISOLATED SERIAL INTERFACE CHANNEL | ISOLATED SERIAL INTERFACE CHANNEL |
| | 30DC/1A | RS422Rx | RS485 | RS422Tx | RS485 | RS422Tx | RS485 |
| | | D+ | D- | D+ | D- | D+ | D- |
| | | 11 | 12 | 13 | 14 | 15 | 16 |

| BUS CON M 10 | | | | | | | |
|-----------------------------------|----------------------------|----------------------------|---------------------|----------------------|----------------------|----------------------|----------------------|
| 3 | 1 | 2 | 1 | 2 | 1 | 2 | 1 |
| ISOLATED SERIAL INTERFACE CHANNEL | I/O 70 PROGRAMMABLE OUTPUT | I/O 70 PROGRAMMABLE OUTPUT | BASIC BACKUP SIGNAL | BACKBONE BUS 1 RS485 | BACKBONE BUS 2 RS485 | BACKBONE BUS 1 RS485 | BACKBONE BUS 2 RS485 |
| RS232/485 | 24V 70mA | 24V 70mA | BRU | D+ | D- | D+ | D- |
| Rs | D- | D+ | 33 | 41 | 42 | 43 | 44 |
| 11 | 24 | 23 | 32 | 34 | 41 | 42 | 43 |

| RELAY M 8 ADDRESS: 72 | | | | | | | |
|--------------------------|---------------------|---------------------|---------------------|---------------------|---------------------|---------------------|---------------------|
| 1 | 2 | 3 | 4 | 5 | 6 | 7 | 8 |
| PROGRAMMABLE OUTPUT | PROGRAMMABLE OUTPUT | PROGRAMMABLE OUTPUT | PROGRAMMABLE OUTPUT | PROGRAMMABLE OUTPUT | PROGRAMMABLE OUTPUT | PROGRAMMABLE OUTPUT | PROGRAMMABLE OUTPUT |
| 230/5A | 230/5A | 230/5A | 230/5A | 230/5A | 230/5A | 230/5A | 230/5A |
| 11 | 21 | 31 | 41 | 51 | 61 | 71 | 81 |

| LOOP M X ADD: 11 | | | |
|---------------------|----|----|----|
| LOOP NUMBER: 1 | | | |
| A | B | C | D |
| + | - | + | - |
| 11 | 12 | 13 | 14 |

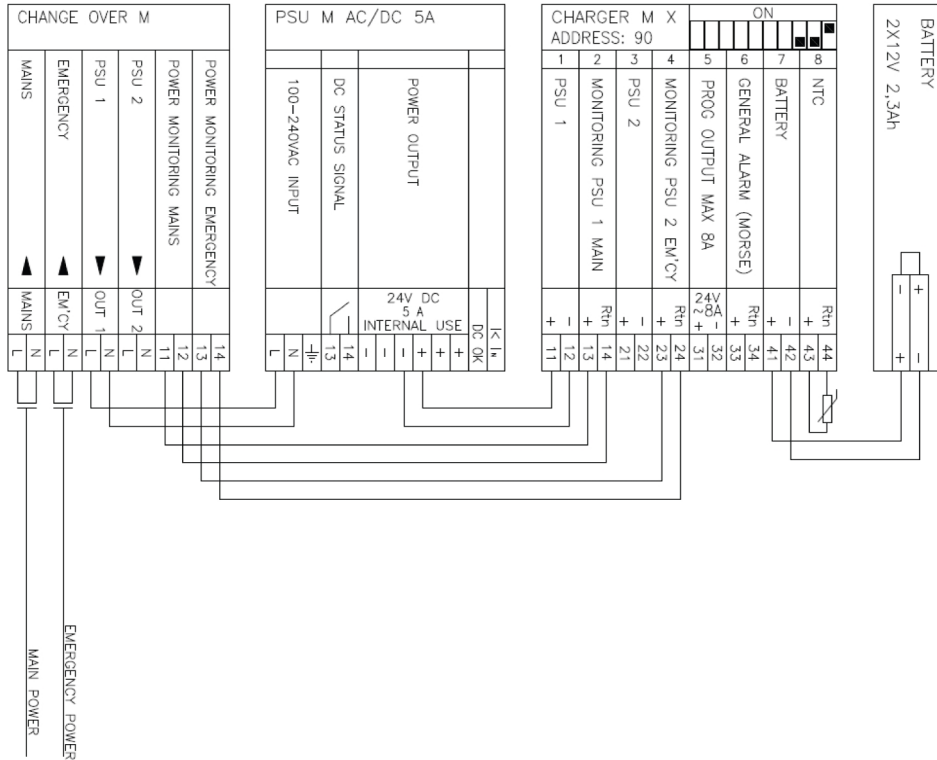
G023074

The specifications described herein are subject to change without notice.

Power connections

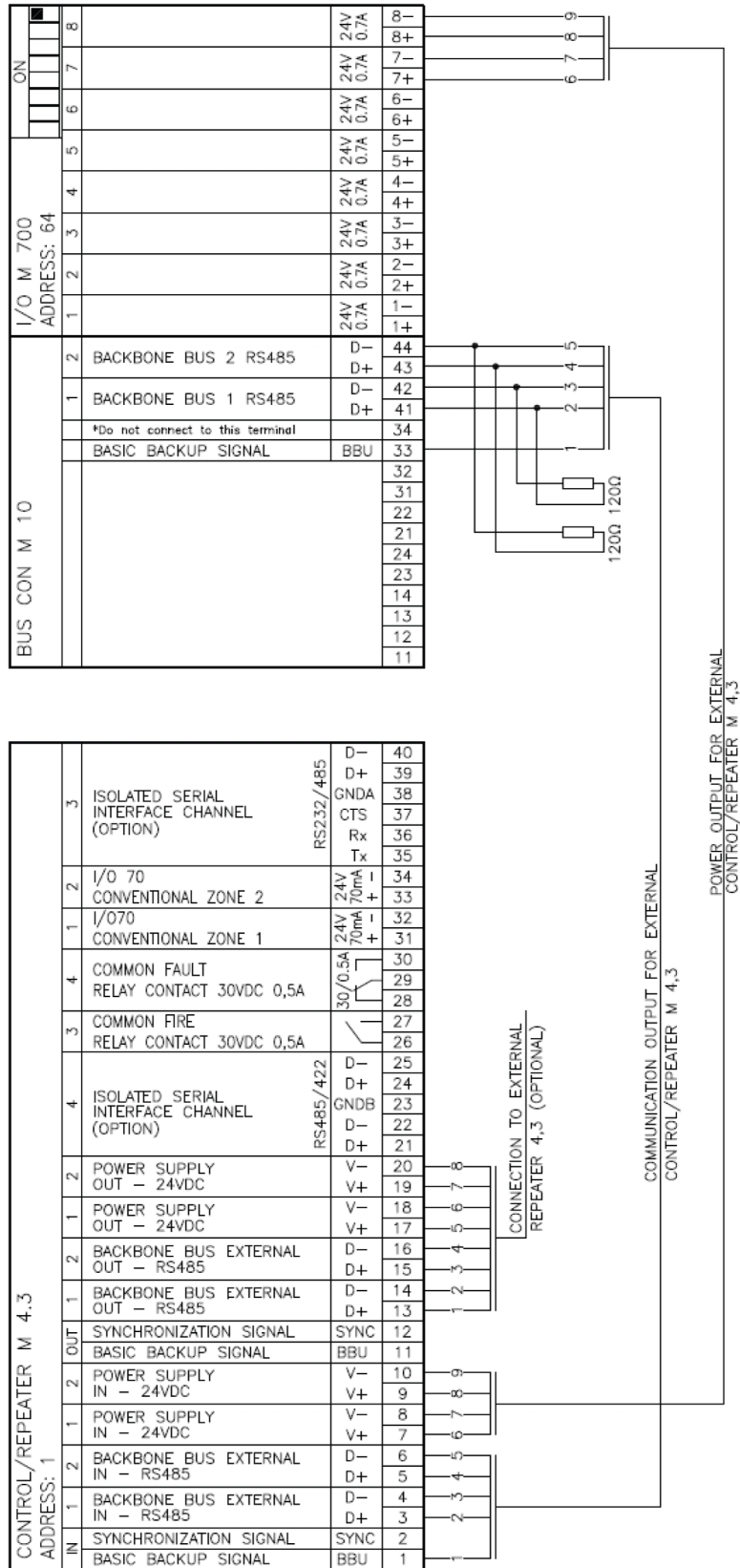
| Description | Part no. | Quantity | Address |
|-------------------|-------------|----------|---------|
| Change Over M X H | 5100066-01A | 1 pcs | N/A |
| PSU M AC/DC 5A | 5100087-02A | 1 pcs | N/A |
| Charger M H | 5100062-01A | 1 pcs | 90 |
| Battery 12V 2.3Ah | 005157 | 2 pcs | N/A |

Note!
If DIP switch 10 is ON,
output 5 will always be
active.



G023075

Connections to external control/repeater panel(s) Control M 4.3 (5100195-20A)



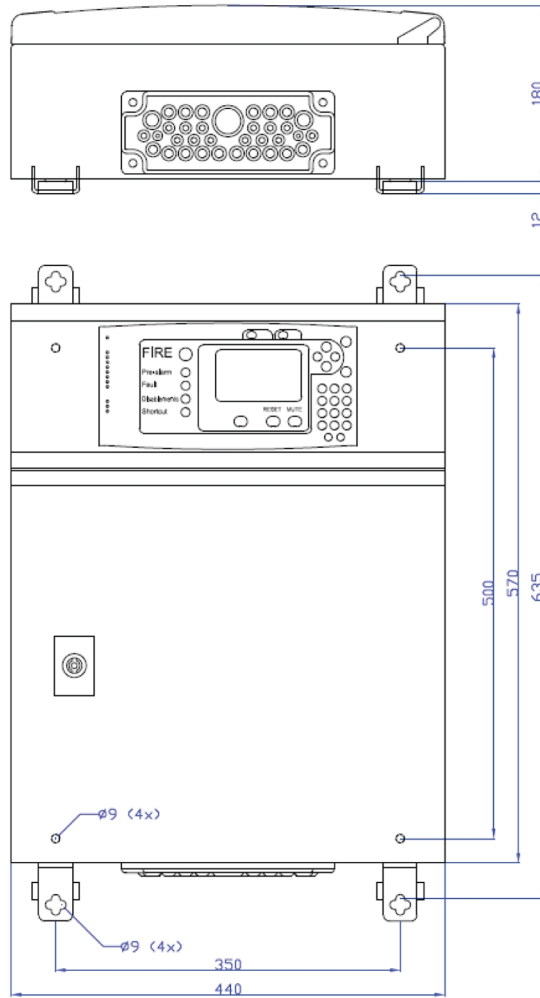
G023076

The specifications described herein are subject to change without notice.

Dimensions (mm)

Wall mounted cabinet

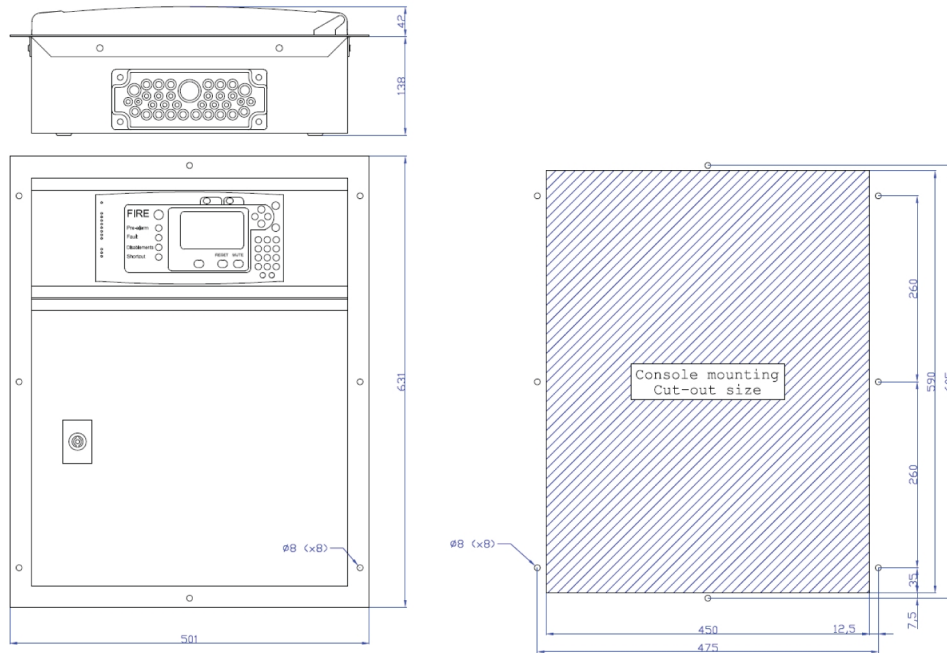
| | |
|---------------------------------------|-------------|
| Description | Partno. |
| 440×570×180 Cabinet for wall mounting | 5100174-00A |



G023072

Recess mounted cabinet

| | |
|---|-------------|
| Description | Partno. |
| 440×570×180 Cabinet for recess mounting | 5100207-00A |



G023073