



Manual Call Point IP67 Salwico MCP-A WP SCI (GB)

Part no. 5200031-02B

System: Salwico Cargo, Salwico Cruise, Salwico LNG, Salwico Offshore, Salwico Ro/Pax, Salwico Workboat, Salwico Yacht, Salwico Navy, OEM Extinguish, CCP, CS3000, CS4000

G010112

General Description

MCP-A WP SCI is an addressable manual call point, designed for Salwico fire alarm systems as specified above. The selected material PC/ABS and the encapsulation, with ingress protection IP67, makes it very suitable for harsh environment.

Pressing the glass causing it to crack activates the fire alarm. A protective plastic coating on the glass prevents operator injury.

An LED on the front of the call point indicates the fire alarm. The LED remains lit until the fire alarm has been reset on the fire alarm panel.

The call point can also be tested with a special key, included in the delivery.

The address of the call point is set with a DIP-switch.

MCP-A WP SCI is developed to provide Short Circuit Protection. The Short Circuit Isolator function is fully transparent and do not require any setting.




NOTE!

This product is not a compatible replacement for 5200031-01A MCP-A WP (GB)

Data

Working voltage	22-38 VDC
Supervising current	0.25 mA
Alarm current	2.5 mA
Current when short circuited	12 mA
Ingress protection	IP67
Temperature range	-25 °C to +70 °C
Ambient humidity	0 to 95% RH
Material	PC/ABS

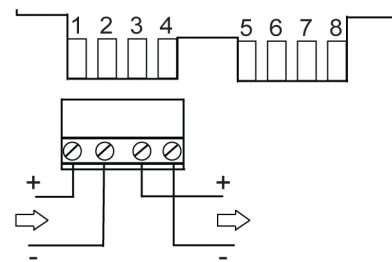
Colour	Red, RAL 3001
Weight	240 g ± 5%
Cable dimension	Ø6-12 mm
Certified according to	 2531/yyyy yyyy = year of production

Accessories

Spare glass (10pcs.)	Part no. 5200075-00A
----------------------	----------------------

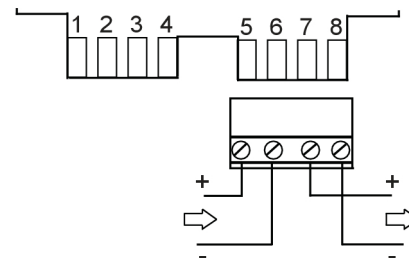
Connection

Connection with short-circuit protection



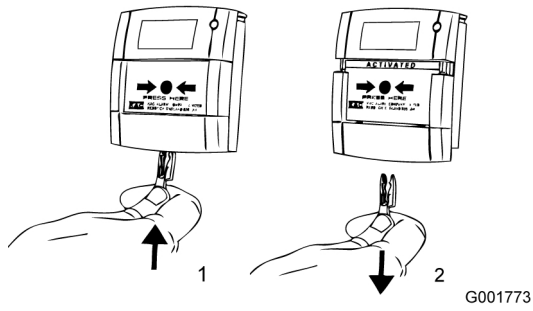
G003213

Connection without short-circuit protection



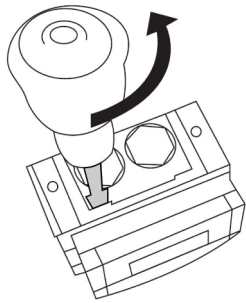
G003771

Test



2. Place the edge of a large flat bladed screwdriver into the slot between the cover and back box, as shown in picture, and gently twist until the latches are disengaged.
3. Pull cover away from the back box.

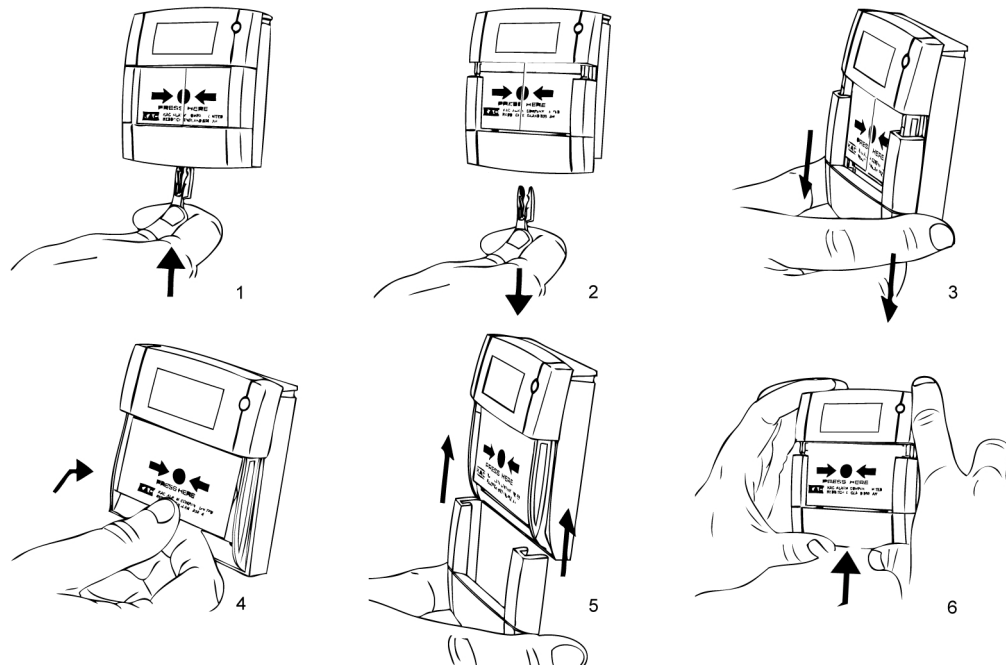
Cover removal



G003072

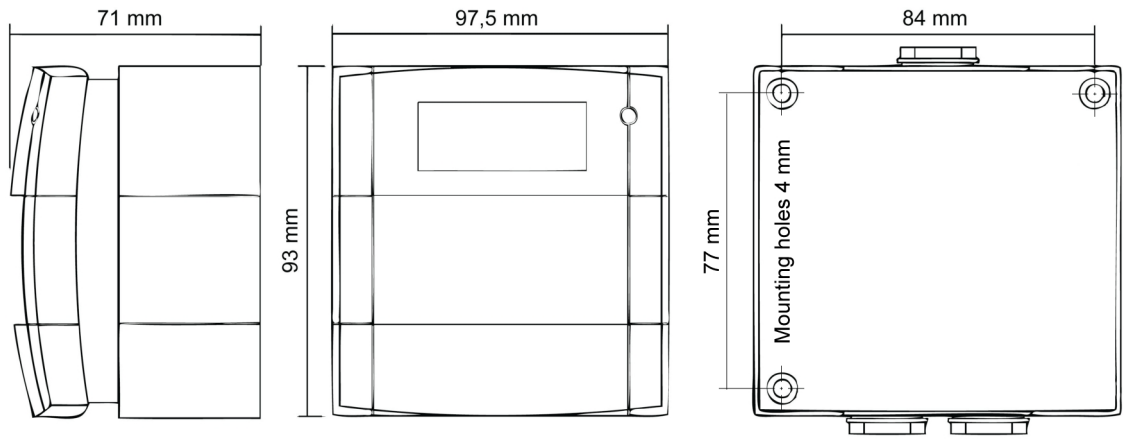
1. Remove the four cover fixing screws.

Replace glass



G001779

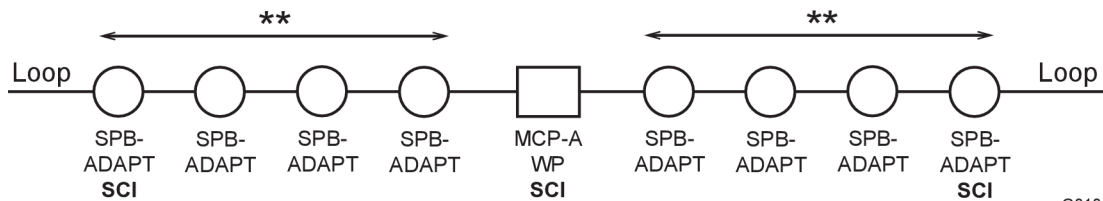
Dimensions (mm)



G001782

Typical use

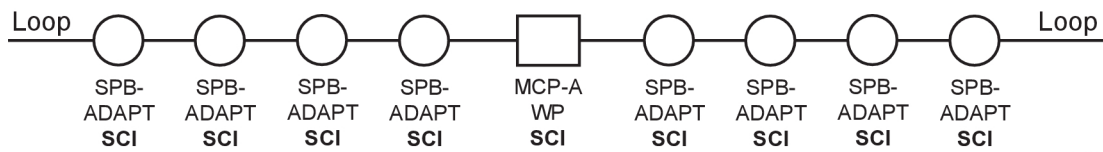
Example 1



G010114

** = Max 25 detector heads

Example 2



G010115