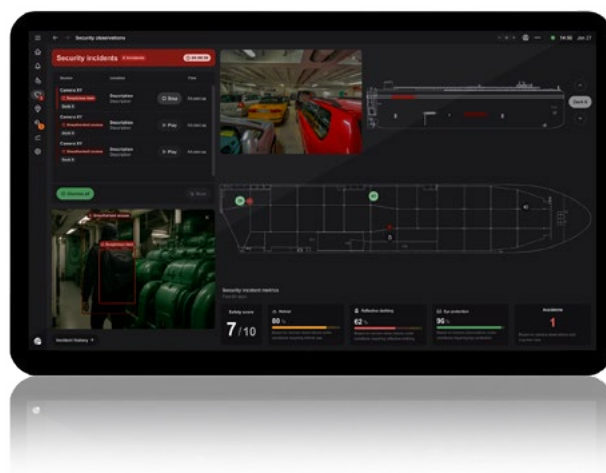


SensEye

See everything. Miss nothing.

SensEye brings together AI-powered camera technology and SMiG's safety management system to create a collaborative system that gives you more time when you need it the most.



DETECTS DANGER IN SECONDS

SensEye utilizes traditional CCTV to create an intelligent safety tool that helps predict and prevent incidents before they escalate.

FASTER ACTION WITHOUT PHYSICAL CHECKS

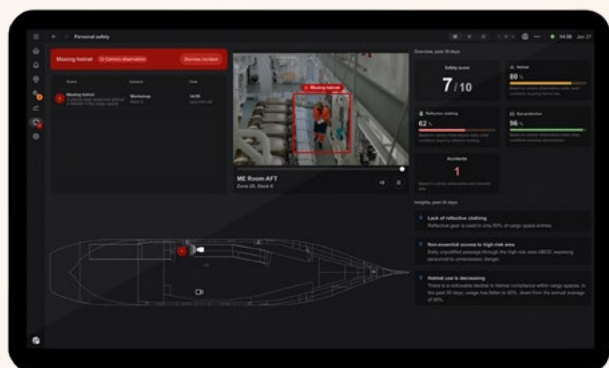
View the situation instantly in SMiG, without having to send personnel to verify the situation – reducing response time in critical situations.

ACCURACY THAT BUILDS TRUST

AI validation through camera analytics helps confirm or dismiss alarms instantly, reducing unnecessary disruptions.

ACTIONABLE INSIGHTS IN REAL TIME

Your crew can act faster and more decisively, backed by the certainty of dual-verified detection.



Dynamic risk response

SensEye introduces a smarter, faster approach to risk response. As SMiG detects fire, gas or other hazardous events, SensEye automatically reconfigure to focus on the risk.

SensEye offering



Fire detection

- Smoke detection
- Flame detection



People

- Man down
- Head count
- Intrusion detection
- People protection violations
- Face Recognition
- Loitering
- Safety Rating



Object

- Missing objects
- Unattended object

Real-time alerts: Instant safety, security and ops incident detection

Early fault spotting: Catch malfunctions before they cause incidents or downtime

Sensor-triggered live view: Utilize cameras for quicker response to existing sensors

Operational efficiency: Streamline workflows and cut manual checks

Global support with local expertise



Consilium offers fast and accessible support no matter where you are in the world. Nothing beats local expertise in your language. With a global service network and a strong local presence, we ensure accessibility wherever you operate.



Connect with your local partner