

Fire Detection System

Fire detection systems are vital for maritime safety, designed to protect lives, vessels, and cargo from fire threats. Using advanced sensors and real-time alerts, these systems enable rapid response to potential dangers. Consilium Safety systems ensure compliance with maritime regulations, minimizing risks and enhancing operational safety. Beyond meeting standards, they provide peace of mind, supporting efficient and secure maritime operations.

What we do:

- System health check
- Inspection and troubleshooting
- Training and support
- Start-up and commissioning



Gas Sampling / Detection System

The Consilium Gas Sampling System (CGS50/500) integrates seamlessly with the modular Consilium Common Platform (CCP), offering flexibility, user-friendliness, and easy upgrades. The system allows for tailored functionalities, ensuring adaptability, while its backward compatibility with the Salwico SW2020 simplifies replacements. With a global support network and efficient service procedures, Consilium ensures reliability and quick access to spare parts.



What we do:

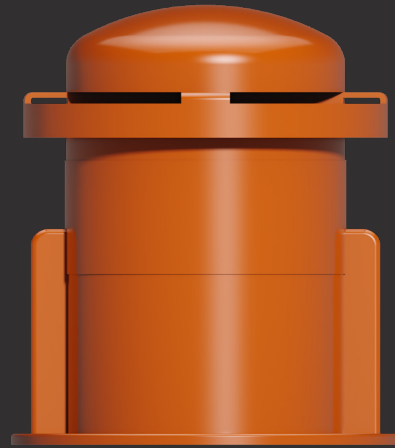
- Verification and calibration
- Inspection and troubleshooting
- Training and support
- Start-up and commissioning

Voyage Data Recorders

Voyage Data Recorders (VDRs) are crucial for maritime safety, recording key data such as ship position, speed, and sensor information throughout a voyage. These systems are vital for post-voyage analysis, performance assessment, and regulatory compliance. We provide reliable, cutting-edge VDR solutions through partnerships, ensuring exceptional support and peace of mind for our customers.

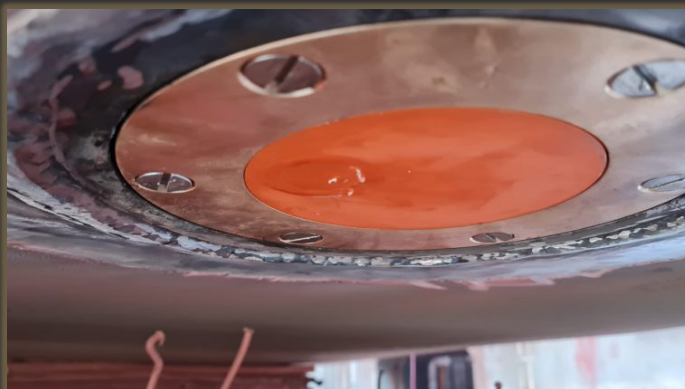
What we do:

- VDR APT (Annual Performance Test)
- Inspection and troubleshooting
- Start-up and commissioning



Speedlog and Echosounders System

Speed logs and echosounders are essential tools for maritime operations, ensuring both safety and efficiency. The speed logs provide real-time, accurate data on a vessel's speed, helping operators make informed decisions to optimize navigation and fuel consumption. Echosounders, meanwhile, measure water depth and underwater terrain, ensuring safe passage by identifying obstacles.



What we do:

- Transducer replacement
- Inspection and troubleshooting
- Start-up and commissioning

Brands We Support



Emerson Marine Solutions

Marine Tank Management Systems (Ex Saab, Rosemount, Micromotion, SF-Control, Damcos, IPH).

The Inelteh logo consists of the word "INELTEH" in a white, bold, sans-serif font, centered within a dark blue rectangular background.

INELTEH

INELTEH d.o.o.

Magnetic Level Switches, Emergency Engine Telegraphs, Signalling Devices.



NAPA Ltd.

Design and loading software and hardware, in addition to fleet intelligence, performance monitoring, and weather routing.

The Klay-Instruments logo features a blue square icon with a white stylized "K" shape, followed by the text "KLAY-INSTRUMENTS" in a bold, blue, sans-serif font.

KLAY-INSTRUMENTS

KLAY INSTRUMENTS

Pressure and Temperature Transmitters.

Get in touch

Visit our website:



Feel free to contact us:

(0216) 446 23 28

info.tr@consiliumsafty.com

Address: Güzelyalı, Egemen Sk. No:26, 34903 Pendik/İstanbul

